

# Registration Costs

All costs incl. GST. Tax Invoice / Receipt will be issued.

- Conference Registration**

Category \_\_\_\_\_

Cost \_\_\_\_\_

- Conference Dinner**

**@\$65 per person x  
No. of people attending**

\_\_\_\_\_

*Names of accompanying diners*

*Please note any special dietary requirements*

**TOTAL REGISTRATION COSTS ENCLOSED**

\_\_\_\_\_

*Please note: Delegate details may be provided to  
conference sponsors.*

*Please tick the box if you do not wish details to  
be circulated.*

**All cheques payable to  
'Council of Educational Facility Planners  
International—Australian Chapter'**



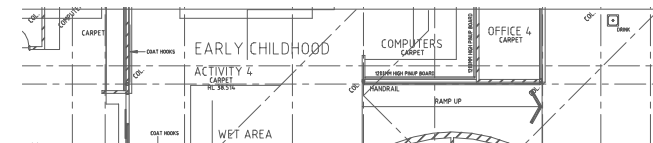
**Mail to:**  
The CEFPI 2002 National Conference Office  
Trinity  
The University of WA  
230 Hampden Road  
Crawley Western Australia 6009

**Contact person:**  
Alec O'Connell, Chair—Organising Committee  
Tel +61 8 9423 9442 Fax +61 8 9423 9422  
Email cefpi2002@trinity.uwa.edu.au

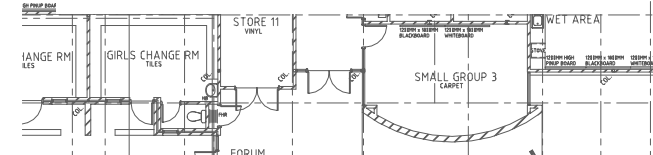


**AUSTRALIAN CHAPTER  
CONFERENCE 2002**

## School Design: PRACTICE IN PLACE



**Seek out best practices in creating quality  
learning environments for students.**



**22nd—24th May 2002  
Fremantle, Western Australia**

[www.cefpi.asn.au](http://www.cefpi.asn.au)

## Conference Theme

### School Design: PRACTICE IN PLACE

**Practice in Place** focuses upon the changes in educational practice that are having the greatest impact upon the built educational environment. It will also demonstrate the links between the performance of buildings and learning outcomes, and how the design and provision of schools needs to better match changing educational practice.

As a delegate, you and your organisation will receive many new ideas. If you take away only one to implement, many will benefit.

#### What is CEFPI?

The Council of Educational Facility Planners International (CEFPI) is a worldwide professional organisation established in 1921 to be an advocate for excellence in student learning environments. CEFPI's mission is to be the primary advocate and resource for planning effective educational facilities. We serve those who use, plan, design, construct, maintain, equip, and operate educational facilities.

Council membership has brought together a mixture of professions, schools-of-thought, and practitioners who convene throughout the world in their quest for best practices and knowledge.

#### CEFPI believes that:

- Facilities impact the learning, development and behaviour of the facility user;
- The planning process is essential for quality facilities;
- Sharing and networking improves the planning process; and
- There is a standard by which to measure.

#### WHO SHOULD ATTEND?

CEFPI's membership includes **planners, educators, principals, bursars, architects, educational authorities, engineers, manufacturers and suppliers**—professions who each contribute to the evolution of learning environments. The 2002 Conference is available to serve the needs of professionals who continually seek out best practices in creating quality learning environments for students. The conference will showcase some of Western Australia's newer public & private schools and refurbishments where curriculum, pedagogical and organisational changes have been implemented.

## Conference Programme

### Wed. 22nd May, 2002

#### FREMANTLE SAILING CLUB

8.45-9.00 am	Welcome	
9.00-10.30 am	Key Note Speaker	<b>Jeff Lackney</b>
11.00-12.00	Speaker 2	<b>Alan Robson</b>
12.00- 1.00 pm	Speaker 3	<b>Max Angus</b>
2.00-3.00	Panel Session	
3.30-5.00	Tours	<b>Fremantle Historical Sites</b>
5.00-7.00	Hospitality	<b>Little Creatures Brewery</b>

### Thurs. 23rd May, 2002

#### UNIVERSITY of NOTRE DAME AUSTRALIA

8.30-10.00	Workshop	<b>Prakash Nair</b>
10.30-5.00	Tours of Schools	<b>Tours A, B, C or D</b> (see below)

7.30	Conference Dinner	<b>R.F.B.Yacht Club</b>
------	-------------------	-------------------------

### Fri. 24th May, 2002

#### UNIVERSITY of NOTRE DAME AUSTRALIA

8.30-10.00	Tour	<b>University of Notre Dame, Fremantle</b>
10.30-5.00	Tours of Schools	<b>Tours A, B, C or D</b> (see below)
5.00-6.00	Conference Close	<b>Curtin Centre, Curtin University of Technology</b>

## Site Visits

Delegates will attend 1 tour each day

<b>Tour A</b>	St Stephen's School, Carramar; St Helena's Catholic Primary School, Ellenbrook; All Saints College, Bullcreek
<b>Tour B</b>	Emmanuel Catholic College, Beeliar; Mandurah Senior College, Peel Campus; Halls Head Community College, Mandurah
<b>Tour C</b>	Penrhos College, Como; Kinross College, Kinross; Quinns Beach Primary School, Quinns
<b>Tour D</b>	Shenton College, Shenton Park; Sevenoaks College, Cannington; Cannington Community College, Cannington

**For full programme details including key note speakers & paper abstracts, descriptions and photos of each school and online registration, please refer to the website [www.cefpi.asn.au](http://www.cefpi.asn.au)**

## Conference Registration

1. **Website Registration**  
[www.cefpi.asn.au](http://www.cefpi.asn.au)

### OR FAX / MAIL

- 2.

Title \_\_\_\_\_

Name \_\_\_\_\_

Position \_\_\_\_\_

Organisation \_\_\_\_\_

Postal Address \_\_\_\_\_

State \_\_\_\_\_

Country \_\_\_\_\_ Postcode \_\_\_\_\_

Fax Number \_\_\_\_\_

Email \_\_\_\_\_

CEFPI Membership No. \_\_\_\_\_

Please indicate preferred Tours in order of preference (Number 1-4)

A. \_\_\_\_\_ B. \_\_\_\_\_ C. \_\_\_\_\_ D. \_\_\_\_\_

Corporate Registration entitles 1 representative per day

### Early Bird Registration *Closes 28th March*

- CEFPI Member \$330 AUD
- Non-CEFPI Member \$380 AUD
- Corporate \$380 AUD
- Student \$ 70 AUD

### Registration *After 28th March*

- CEFPI Member \$350 AUD
- Non-CEFPI Member \$400 AUD
- Corporate \$400 AUD
- Student \$ 90 AUD